

## Technical Specification

### Theatre



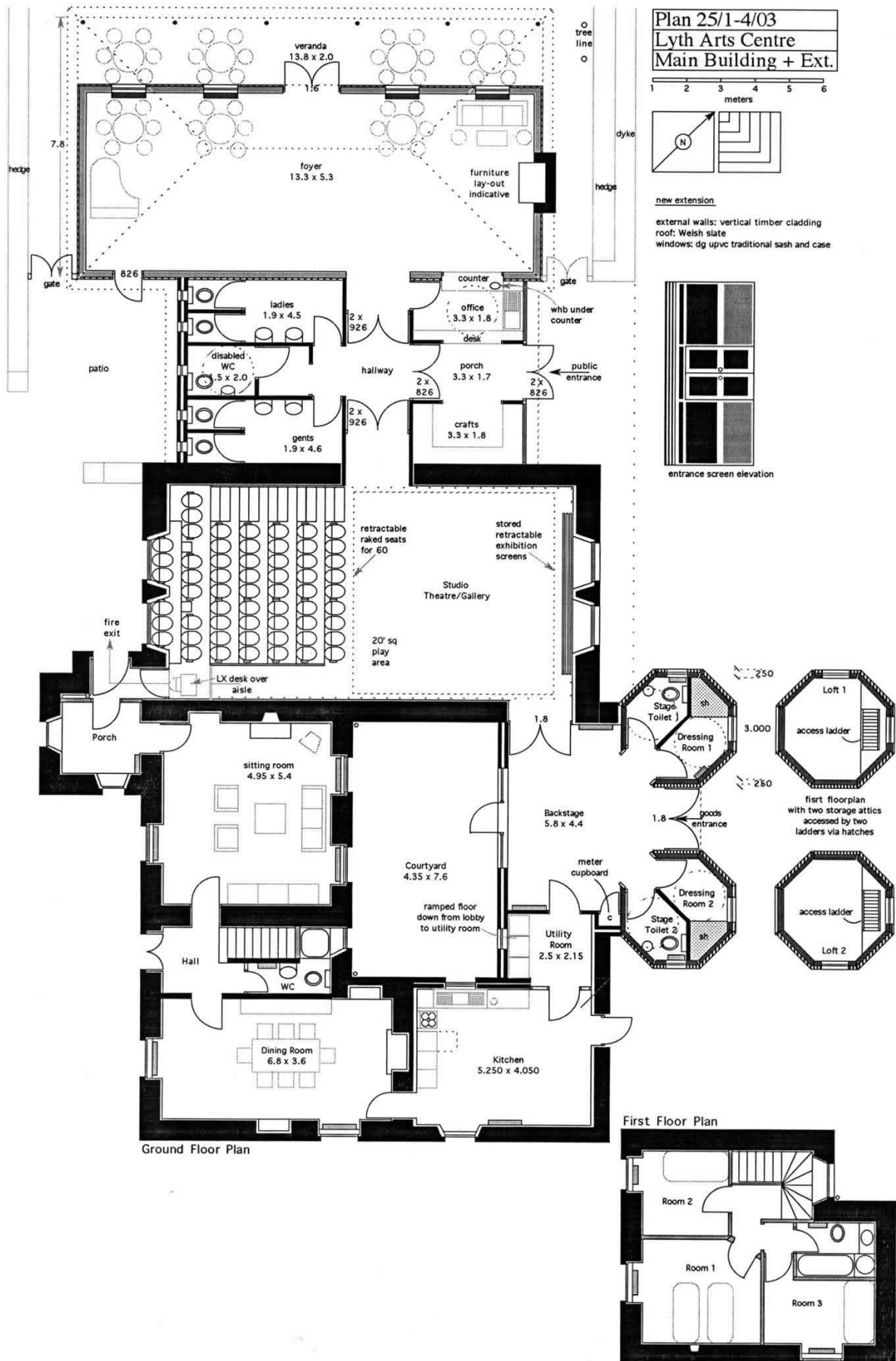
- Playing space: 5m (depth) x 6m (width) (10m x 6m with seats retracted)
- Height: 3.6m to lanterns (4.57m high to ceiling)
- Raked seating for 60 end-on or 72 with seats side of stage.
- Aisles either side of seating, one stepped (stage right), one flat (stage left) which is a fire exit
- Floor is worn, varnished redwood
- Thick black Bolton curtains around walls, 11' high at sides and 13' high at stage rear wall.
- Ceiling and all visible surfaces painted black
- 13A power supply available stage left, stage right and upstage
- Dressing Rooms (x2) and Green Room backstage, 2 toilets / showers. Beds above

### Lounge (when used as performance space)



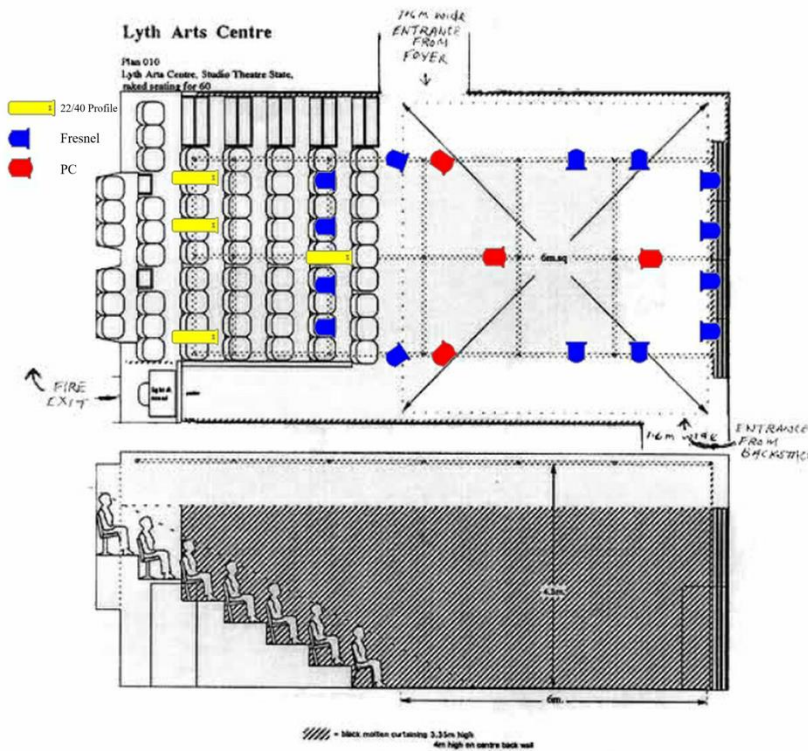
- Space: 13.3m (length) x 5.3m (width) x 3.76m (height)
- Seating (end-on or cabaret style) for up to 60
- French windows opening onto veranda and sheltered garden
- Dark blue needle-punch fitted carpet, pale grey-green walls, white vaulted ceiling.
- Access to bar/kitchen in corner.
- Open log fire

# Building Floor Plan



# Lighting

The lighting rig is 48mm alloy tubing suspended 150mm from ceiling at 1.925m centres in a rectangular pattern.



## Lighting Stock:

**Quartet Lights:** 8 x 650watt Fresnels, 2 x 650watt PCs, 4 x 650watt 22/40 profile

**Selecon Acclaim Lights:** 6 x 650watt Fresnels, 2 x 650watt PCs, this lighting lives permanently on the overhead grid but can be moved around as required. All fresnels and PCs have barn doors. All lamps have gel frames. Selection of gels.

**Showtec:** 4 x LED Powerspot 6 Q5 (RGBWA)

**Dimmers:** 4 x Zero88 Betapack dimmer racks (each with 6 channels and 12 sockets) sited backstage.

**Desk:** Zero88 Jester 24/48 channel desk (positioned on building floor plan - see diagram - but is portable)

**House lights:** on separate dimmer on a trailing cable to LX desk or portable.

**Ladders:** 15' A-frame ladder, 11' straight ladder, 6' step-ladder.

# Sound

Allen and Heath Qu-24 desk – 24 channel digital mixer (with flight case for touring)  
Allen and Heath Wizard desk – 12 channel analogue mixer (8 mono and 2 stereo)  
Nexo PS 10 amp to drive overhead speakers  
Denon DCD-685 CD player

5 x Shure SM58 microphones      2 x AKG C1000 condenser microphones  
5 x tall boom mic stands      4 x short boom mic stands  
8 x Behringer DI boxes      4 x EV Sx100a stage monitors  
4 x Guitar Stands      6 x music stands  
15+ x Various Length XLR Cables

This sound gear above is shared with our touring PA see below in next section

*overhead from lighting grid:*  
2 x Nexo PS 10 speakers  
25m x 12/8 channel multi-core cable link from desk to stage

# Touring PA

2 x TurboSound M12 active speakers  
2 x TurboSound M15B active subwoofers  
2 x speakers poles

# AV

200" Fast Fold Projection Screen, Front + Rear, 16:9  
Optoma X319UST (HDMI & VGA inputs)  
Epson EX24U Projector (HDMI & VGA inputs)  
15m HDMI  
10m VGA  
2m HDMI

## **Instruments available**

Steinway B grand piano 6'10" (black high gloss) 2004\*  
Nord Stage 2 EX stage piano  
Yamaha Model U3 upright piano 4'3" (black high gloss) 1985  
Roland HP800 keyboard  
Peavey KB/A60 amplifier  
Peavey Basic 112 amplifier

*\* LAC will charge a tuning contra of £50 per visiting company*

## **Contact Details**

Bobby McCarthy (Technical Manager)  
bobby@lytharts.org.uk  
01955 641 434